



## Mass to Mass Stoich

Worksheet #1

/10

Name:

Period:

Seat #

**Directions:** Use the mole highway and dimensional analysis to solve. Show all your work!



If you start with 10 g of lithium hydroxide, how many grams of lithium bromide will be produced? **Ans: 36.3 g LiBr**



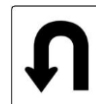
If you start with 45 grams of ethylene ( $\text{C}_2\text{H}_4$ ), how many grams of carbon dioxide will be produced? **Ans: 141.4 g CO<sub>2</sub>**



If you start with 5.5 grams of lithium chloride, how many grams of calcium chloride will be produced? **Ans: 7.14 g CaCl<sub>2</sub>**



If you start with 20 grams of hydrochloric acid, how many grams of sulfuric acid will be produced?



## Mass to Mass Stoich

Worksheet #1

/10

Name:

Period:

Seat #

**Directions:** Use the mole highway and dimensional analysis to solve. Show all your work!



If you start with 10 g of lithium hydroxide, how many grams of lithium bromide will be produced? **Ans: 36.3 g LiBr**



If you start with 45 grams of ethylene ( $\text{C}_2\text{H}_4$ ), how many grams of carbon dioxide will be produced? **Ans: 141.4 g CO<sub>2</sub>**



If you start with 5.5 grams of lithium chloride, how many grams of calcium chloride will be produced? **Ans: 7.14 g CaCl<sub>2</sub>**



If you start with 20 grams of hydrochloric acid, how many grams of sulfuric acid will be produced?